

## Exhibition OPPORTUNITIES

### You are invited

Researchers from more than 20 countries involved with fusion reactor materials will assemble in Aomori for the 18<sup>th</sup> International Conference on Fusion Reactor Materials from 5<sup>th</sup> to 10<sup>th</sup> November, 2017. ICFRM-18 offers unique opportunity for vendors and organizations, who support the fusion reactor development from many aspects, to show their products and services to the professionals in this industry. Please take advantage of this excellent opportunity to grab the attention of decision-makers and high level industry plyers from around the world.

### What is ICFRM?

ICFRM (International Conference on Fusion Reactor Materials) is the conference series that is the major forum for the exchange of information based on the research and development of fusion reactor materials. Overcoming material issues are the key to the realization of fusion energy. The scope of the conference ranges from fundamental materials science to search for engineering materials in-service performance.

### Overview of ICFRM-18

- Name The 18<sup>th</sup> International Conference on Fusion Reactor Materials
- Dates November 5 (Sun) to 10 (Fri), 2017
- Venue Link Station Hall Aomori  
1-4-1 Tsutsumi-machi, Aomori-shi, Aomori 039-0812,  
JAPAN  
TEL: +81 (0)17-773-7300 FAX: +81 (0)17-776-2066  
<http://www.aobun-sogei.com/facility/linkstationhall/>
- Hosted by Organizing Committee of the 18<sup>th</sup> International Conference on Fusion Reactor Materials
- In cooperation with (including applying ones, random order);  
National Institute for Quantum and Radiological Science and Technology



Linkstationhall Aomori

Atomic Energy Society of Japan (Fusion Engineering, Material Science and Technology)

The Japan Institute of Metals and Materials

The Japan Society of Plasma Science and Nuclear Fusion Research

The Iron and Steel Institute of Japan

The Japan Society of Mechanical Engineers

The Ceramic Society of Japan

Japan Society of Corrosion Engineering

The Society of Materials Science, Japan

Japan Welding Society

Japan Society of Energy and Resources

The Japan Welding Engineering Society

The Institute of Electrical Engineers of Japan

The Carbon Society of Japan

The Japan Society of Applied Physics

Japan Society for Composite Materials

Japan Society of Maintenology

Smart Processing Society for Materials, Environment & Energy

The British Nuclear Energy Society

The American Nuclear Society

The European Nuclear Society

The American Ceramics Society

The Korean Institute for Metals

The Metallurgical Society of China

The Nuclear Metallurgy Committee of the AIME and ASM

- Under auspices of (including applying ones, random order);

Ministry of Education, Culture, Sports, Science and Technology-Japan

Aomori Prefecture, Aomori City, Aomori ITER Project Promotion Council

Yu-Kwai, Future Energy Research Association, ICF Forum

- Expected number of participants: 420

Domestic participants: 130

International participants: 290 (90 from China, 60 from USA and 40 from Germany)

- Web site <http://www.icfrm-18.com>

### Program

As of June 15, 2017

	Nov. 5 (Sun)	Nov. 6 (Mon)	Nov. 7 (Tue)	Nov. 8 (Wed)	Nov. 9 (Thrs)	Nov. 10 (Fri)
8:00		Registration	Registration	Registration	Registration	Registration
8:30				8:30 - 9:50	8:30 - 9:50	8:30 - 10:30
9:00		9:00 - 10:50 Opening Welcome address Special Lectures :45min x2 (6S)	9:00 - 12:00 Carrying in Exhibits	8:30 - 10:30 Plenary (7PL) 40min x3	8:30 - 9:50 Plenary (8PL) 40min x2	8:30 - 10:30 Plenary (9PL) 40min x2
9:30				Coffee break	Coffee break	9:00 - 11:00 Carrying out Exhibits
10:00		Coffee break	Coffee break	10:20 - 12:40	10:20 - 12:40	Coffee break
10:30		11:20 - 13:00 Oral (6A) Oral (6B) 30min x2 30min x2 20min x2 20min x2	11:00 - 12:40 Oral (7A) Oral (7B) 30min x2 30min x2 20min x2 20min x2	10:20 - 12:40 Oral (8A) Oral (8B) 30min x2 30min x2 20min x4 20min x4	10:20 - 12:40 Oral (9A) Oral (9B) 30min x2 30min x2 20min x4 20min x4	11:00 - 11:50 Summary session
11:00				Lunch	Lunch (International Advisory Committee Meeting)	8:00 - 16:30 Exhibition
11:30						
12:00						
13:00		Lunch	Lunch	8:00 - 18:30 Exhibition	8:00 - 18:30 Exhibition	
13:30	13:30-15:00 Special Introductory session (Warasse)					
14:00		14:20 - 16:40 Oral (6C) Oral (6D) 30minx2 30minx2 20minx4 20minx4	14:00 - 16:20 Oral (7C) Oral (7D) 30minx2 30minx2 20minx4 20minx4	14:00 - 16:20 Oral (8C) Oral (D) 30minx2 30minx3 20minx4 20minx3	14:00 - 16:20 Oral (9C) Oral (9D) 30minx2 30minx2 20minx4 20minx4	12:10 - Technical tour
14:30						
15:00						
15:30	15:30-17:00 Special Introductory session (Warasse)					
16:00	Registration (Warasse)					
16:30		Coffee break	Coffee break	Coffee break	Coffee break	
17:00		17:00 - 19:00 Poster (6PT)	16:40 - 18:40 Poster (7PT)	16:40 - 18:40 Poster (8PT)	16:40 - 18:00 Poster (9PT)	16:40 - 19:00 Carrying out Exhibits
17:30						
18:00						
18:30						
19:00						
19:30	Reception (Warasse)				19:00 - Conference Dinner (Hotel Aomori)	
20:00						
20:30						
21:00						

### Main Programs

Program	Dates & Times	Places
Special introductory session	Nov 5 (Sun) 13 : 30 ~, 15 : 30 ~	Event hall on 2F of WA-RASSE
Welcome Reception	Nov 5 (Sun) 19 : 00 ~	Lecture room on 1F of WA-RASSE
Opening Special lecture	Nov 6 (Mon) 9 : 00 ~ 10 : 50	Main lecture hall
Plenary sessions	Nov 7 (Tue) ~ Nov 10 (Fri)	Main lecture hall
Oral	Nov 6 (Mon) ~ Nov 9 (Thu)	Main lecture hall and Sub lecture hall on 4F
Poster	Nov 6 (Mon) ~ Nov 9 (Thu)	Foyer on 2F and 3F
Summary session	Nov 10 (Fri) 11 : 00 ~ 11 : 50	Main lecture hall
Conference dinner	Nov 9 (Thu) 19 : 00 ~	Kujaku-no-ma on 3F of Hotel Aomori

## Floor Plan (revised on June 30)

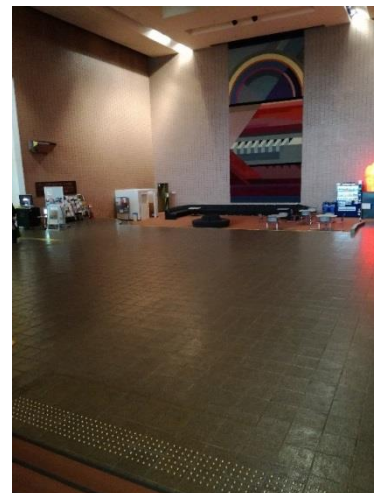
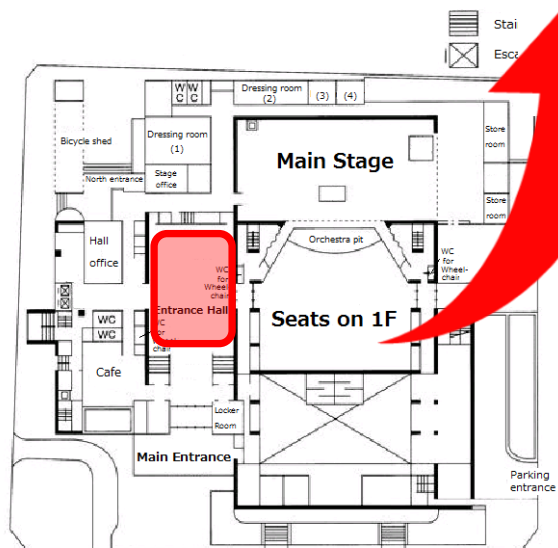
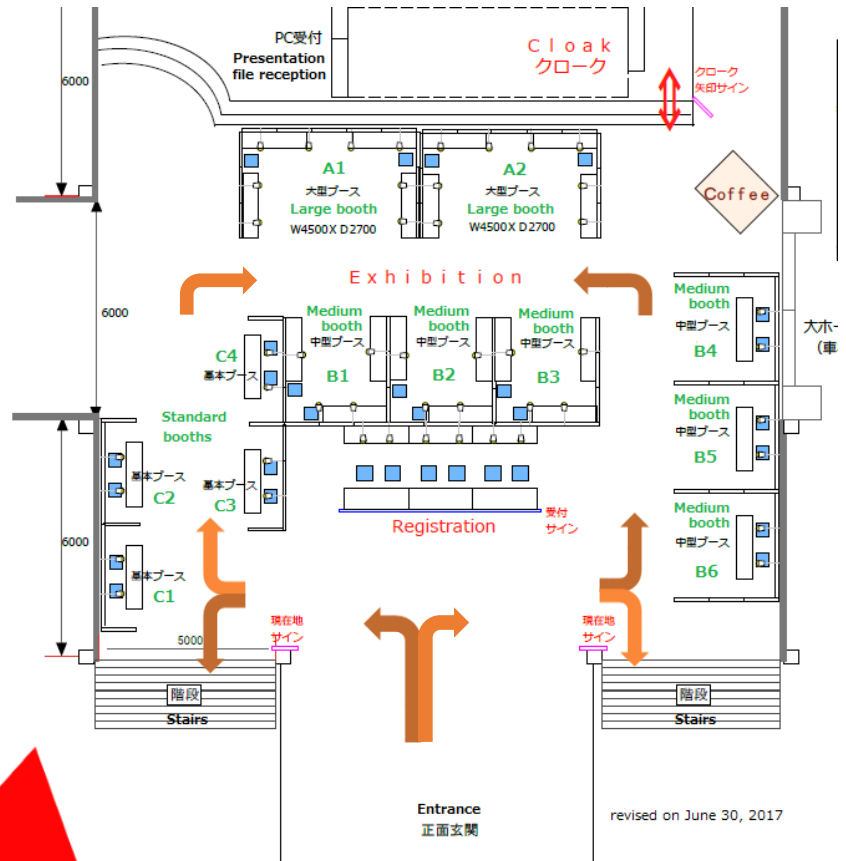
The ICFRM-18 Exhibition will be held at the entrance hall on the 1<sup>st</sup> floor and at the lobby on the 2<sup>nd</sup> floor of Link Station Hall Aomori.

There will be two large booths, six medium booths and four standard booths on the 1<sup>st</sup> floor.

### 1<sup>st</sup> floor

- Large booth: 2 (A1-A2)
- Medium booth: 6 (B1-B6)
- Standard booth: 4 (C1-C4)

Please note the floor plan is subject to variation. If there is a plan change after one's application, we will inform the exhibitor of it immediately



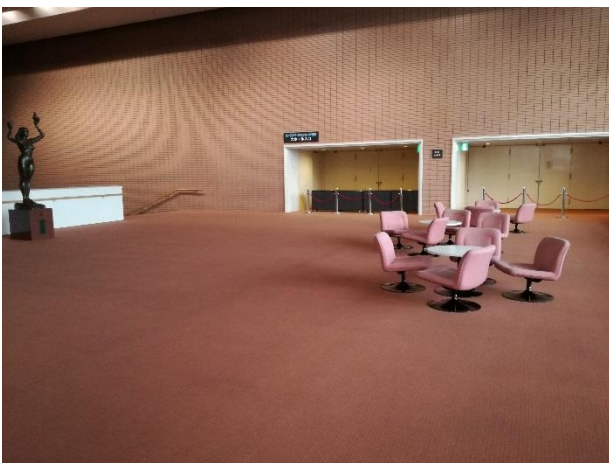
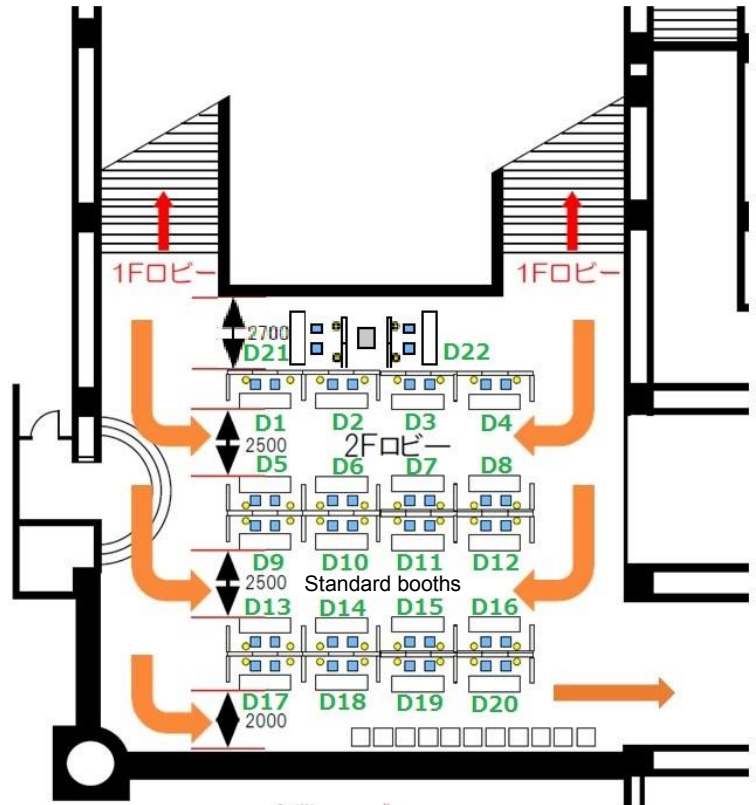
Entrance Hall



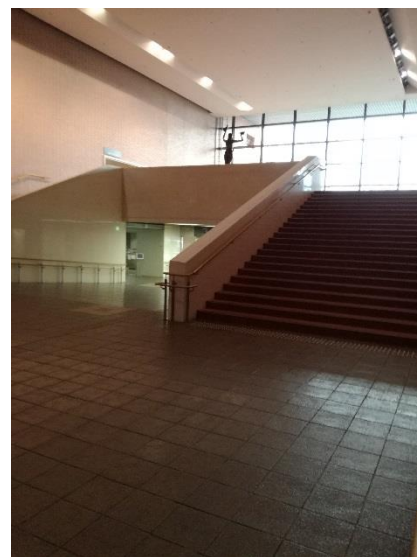
## 2<sup>nd</sup> floor

Standard booth: 22 (D1-D22)

Please note the floor plan is subject to variation. If there is a plan change after one's application, we will inform the exhibitor of it immediately



Lobby on 2F



Lobby on 2F seen from  
Entrance hall

## Exhibition details

- Place Entrance Hall on 1<sup>st</sup> floor and Lobby on 2<sup>nd</sup> floor of Link Station Hall Aomori
- Dates & Times November 6, 2017 (Mon) 12:00 to 9 (Thu)16:30
- Booth type and Fee

Booth type	Number of Booths	Booth size	Including	Fee for each booth (Tax excluded**)
Standard booth	26	2.7×1.3m	Participation fee for one person*	JPY120,000
Medium booth	6	2.7×2.7m	Participation fee for two persons*	JPY240,000
Large booth	2	4.5×2.7m	Participation fee for two persons*	JPY360,000

\*Including fee for reception party, conference dinner, daily lunch (6<sup>th</sup>-9<sup>th</sup>) and auditing scientific sessions.  
Not including presentations and publications.

\*\*8 % of consumption tax will be added to this price.

- Booth Specifications Partitions : W900mm × H2,100mm  
Company name panel : W1,200mm × H200mm Black and white  
Electric outlets : Two electric outlets (100V, 500W)  
Table : W1,800mm × D450mm  
Chair : Folding pipe chair

Booth type	Tables	Chairs
Standard booth	1	2
Medium booth	3	2
Large booth	4	2

\*If you do not need tables and chairs, please let Exhibition desk know in advance. The contact of Exhibition desk will be informed after you make an application.

\*If you require additional specifications such as company name panel with color print, bigger electric power, additional/different tables and chairs, additional cost will be charged.

- Carrying in/out Exhibitors are responsible for carrying in or out their exhibits.  
Carrying in: November 5, 2017(Sun) 16:00 ~ 20:00

November 6, 2017(Mon) 8:00 ~ 12:00

Carrying out: November 9, 2017(Thu) 16:40 ~ November 10(Fri) 11:00

Please refer to Exhibitor manual, which will be sent to you after application, for more details. Please contact Secretariat in advance if you will carry in very heavy or big exhibits.

■ Application

Please fill out the application form and send it to Secretariat by e-mail. Certification will be sent to the registered e-mail address by return. If you have any questions, please contact Secretariat.

**Secretariat**

Kanako Nakajima (Ms)  
National Institute for Quantum and  
Radiological Science and Technology  
2-116 Omotedate, Obuchi, Rokkasho-mura,  
Kamikita-gun, Aomori 039-3212 JAPAN  
Tel: +81 (0)175-71-6610  
E-mail: [secretariat@icfrm-18.com](mailto:secretariat@icfrm-18.com)

■ Deadline

September 30, 2017

Even before the deadline, we will close the acceptance of applications if the number of applications reach the number of the booths.

■ Payment

After we receive your application form, we will send you an exhibitors manual and the invoice.

■ Cancellation

Cancellation of your application for exhibition will not be accepted. Accordingly, refund of paid exhibition fee will not be made.

■ Booth allocation

Booths will be allocated on a first-come first-served basis. Please describe the numbers of booths you choose to second preferences in the application form.

■ Security rules

Please place at least one person at your booth during the exhibition. Exhibitors will be responsible for their equipment and property. The organizer will not be responsible for any loss of or damage to exhibitor property, irrespective of the reason.

## Exhibition Application Form

<b>Company name</b>			
<b>Company mailing address</b>			
<b>Booth type &amp; number</b> (Insert check mark etc. next to booth type you apply)	Standard booth		Booth number
	Middle sized booth		First preference :
	Large booth		Second preference :
<b>Names of participants(1)</b>	Department :		
	Title :		
	Name :		
<b>Names of participants(2)</b>	Department :		
	Title :		
	Name :		
<b>TEL</b>			
<b>FAX</b>			
<b>E-mail</b>			
<b>On site contact (Mobile etc.)</b>			
<b>Details of exhibits</b>			
<b>Requests (Special specifications etc.)</b>			

Please fill out the form and send it to [nakajima.kanako@qst.go.jp](mailto:nakajima.kanako@qst.go.jp)